



the **most powerful** video server
and **security framework**
ever deployed.

SecurOS is the nucleus of a complete surveillance and security management topography. SecurOS can manage and monitor an unlimited number of cameras and devices, apply intelligent forensic capabilities, and integrate a variety of disparate systems into one centralized command and control interface. The SecurOS platform is suited for large mission critical applications that involve hundreds or thousands of cameras, sensors and control systems unified into one network.

KEY FEATURES

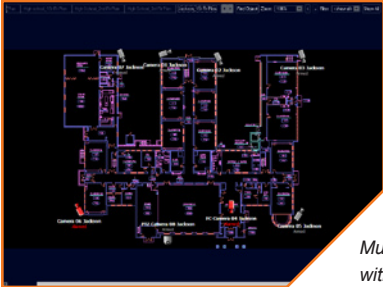
- 1 ADDITIVE / MODULAR ARCHITECTURE**
Scalable system topography generates **ready ROI on the system** - new functionalities and capabilities can generally be added with minimal software management.
- 2 UNIFICATION**
Security networks of unlimited scope - video or telemetry can be locally or centrally monitored and administrated.
- 3 IMAGE ANALYTICS**
POS Monitoring & Shrinkage Detection, Face Recognition, Loitering, People Counting, etc.
- 4 INTEROPERABILITY**
Open architecture - integrate third party systems and devices into one common monitoring/management platform.
- 5 EVENT / SCENARIO MANAGEMENT**
Program complex reactions to complex events to intelligently and dynamically react to real world events.
- 6 BUSINESS INTELLIGENCE**
Advanced analytics and integration of surveillance platform with business process systems allows for proactive action.
- 7 EXTENSIBILITY / CUSTOMIZATION**
From multi layer maps to per-user screens and permissions to custom forms and GUI, SecurOS allows for complete customization based on user need.



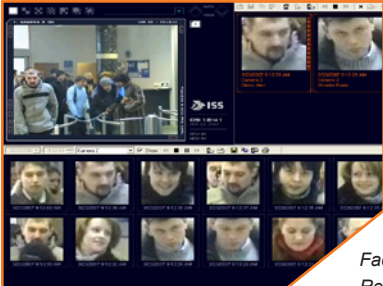
Monitoring Mode



DVR / Video Export



Multi Layer Mapping with Device Annunciation



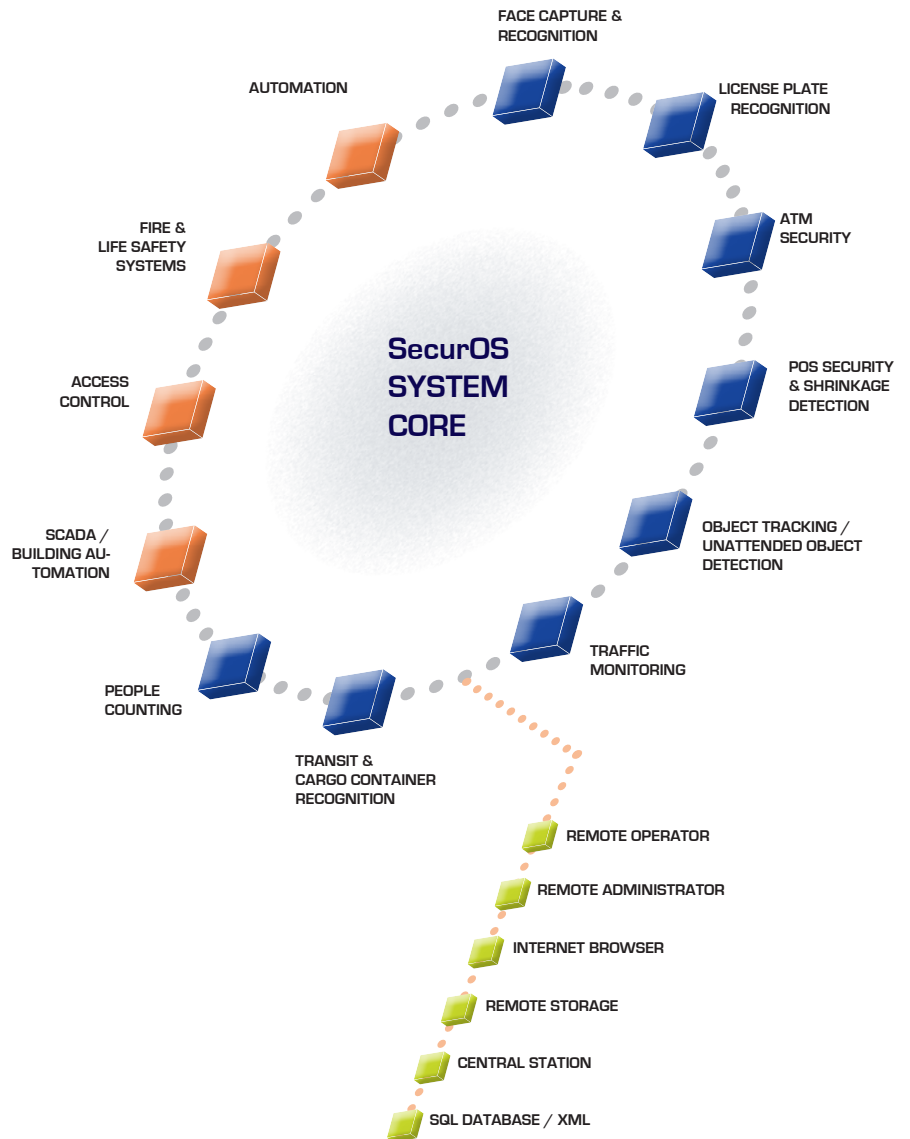
Face Capture & Recognition

SecurOS SYSTEM CHARACTERISTICS

SPECIFICATIONS

- Multi Channel Video Server
 - Analog Camera Capability
 - Connect 16 Cameras @ 30fps
 - Utilize up to 64 Cameras per server
 - 480fps NTSC, 400fps PAL
- Supports IP Camera Network
 - Capable of IP/Analog hybrid
 - Support Hierarchical Redundant Architecture
- Networks of unlimited scope - any server can monitor or manage any object on the network.
- Security on Demand
 - Integrate legacy and third party systems
 - Scalable architecture for "on demand" upgrades
 - Program complex system events, reactions and scenarios
- Object Oriented Architecture - each device can be managed independently
- Stable of Optional Intelligent Video Analytics Capabilities (Face Recognition, License Plate Recognition, Container Recognition, Traffic Monitoring, etc.)
- Integration Development Kit (IDK) available
- Full WatchDog functionality
- Pre and Post Alarm Recording
- Watermark on Video
- Capture and synchronize Video & Audio
- Simultaneous View, Record & Playback
- Enhanced Digital Features
 - PTZ Camera Control
 - Up to 32x Smart Digital Zoom
 - Multi Zone Motion Detection & Masking
 - Image Enhancement Settings
 - Adjustable Video Compression & Motion Detection Sensitivity
- Visual indicators for system modes
- Voice Notification System
- Open Architecture - SDK standard
- Split Multi Layer Mapping
- Macro Reaction Programming
- Input / Output - up to 32 Relays / Sensors
- Wireless PDA Capability
- Time Schedule Engine
- Export to AVI or JPEG
- Alarm by phone, SMS, email
- Remote Client Access & Admin
- XML based Web Environment
- Smart Search Capabilities
- Customizable GUI with user defined screens
- Customizable HTML based user forms
- Advanced IT Architecture
 - Integrates with Microsoft Active Directory
 - Server can run as Windows service
 - Advanced User Rights Management
 - Bandwidth Throttling per user or camera
 - Hierarchical Server Management (Video Management Servers, Indexing Servers, DVRs, Storage Servers, Client Workstations)
- Central Station Capability

INTEROPERABILITY AND VIDEO ANALYTICS



For more information, please contact your local dealer:



9700 Great Seneca
Highway - Suite 117
Rockville MD 20850

1.877.388.1248

info@surveillancesecure.com



Intelligent Security Systems
www.isscctv.com
+1 732 855 1111